

Case History

The Golf Club of Georgia
6425 Windward Parkway
Alpharetta, GA 30005
Mr. Greg Railey – Maintenance Dept.
770-343-9070

Project Date: September 2003

Type of Project: Provide Non-Slip Surface To 3000' Of Course Walkways

Roof Size: 6,000 Square Feet

Product Used: Acry-Tech's "Soft Tread"

Additional Notes: Club regulations required golfers to use "soft spikes" rather than the older metal spikes. But, the wooden walkways proved treacherous with the new spikes. Greg Railey investigated Soft Tread and compared it to other non-slip coatings.

"We experimented with several other coatings that we found on the internet, but none of them gave us the result we wanted", noted Greg Railey. *"Also, most of the other products were either solvent based or were two component materials that we had to mix and measure and had a short pot life. We needed something that we could simply roll on and not have a difficult time applying out on the course."* Railey also noted that there was no waste when using the **SOFT TREAD** because pails could be resealed and cleanup was easy using only soap & water.

*"We haven't had any slips or falls since we installed the **SOFT TREAD** walkways on the bridges, and it seems to be wearing quite well",* Railey said. *"The members seem to like it, too."*



**Case History
February 2008**

Castaway Island is a water park located at TY Park in Hollywood, Florida.

Renovation began in February for their scheduled seasonal opening on March 1st.

This local park has over 10,000 visitors every week during the spring to fall seasons.

TY Park is located at
3300 N. Park Rd.
Hollywood, FL



Previously applied non slip concrete toppings were stained, flaking and in need of serious attention. Acry-Tech Representatives visited the site and recommended the removal of all loose and flaking coatings using high pressure water blasting in order to create a clean, porous surface on which to apply *Soft Tread Anti-Slip Coating*. Rust stains also needed pre-treatment with *Acry-Tech RustX* rust stain remover.

Soft Tread was the chosen product for this project to give maximum traction without abrading wet skin on the children's bare feet.

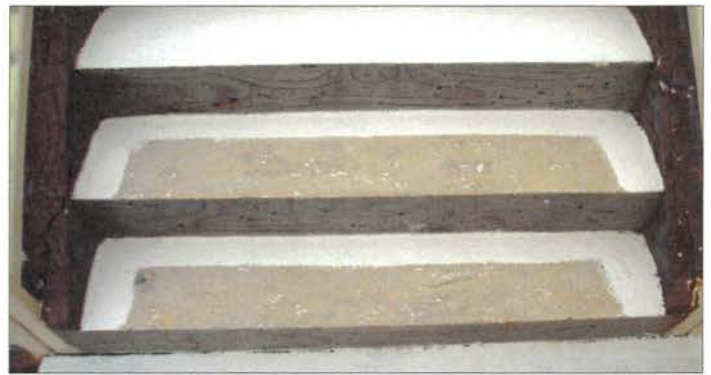


High pressure water blasting was required to remove years of built up, old blistered, peeling and delaminating coatings. A clean surface profile was achieved and will insure excellent adhesion for the *Safe Tread* application.



Rust Stains on the concrete and also on the fiberglass slides were treated with Acry-Tech's RustX Rust Stain Remover.

Then the area to be coated was carefully cut-in with the *Soft Tread* prior to rolling the coating on the stairs and decks.



The result was a very foot-friendly, beautiful and well-protected deck and stairway that allowed maximum safety for the guests while standing up to constant foot traffic, intense sun and pool water.



Soft Tread is a single component, waterbased, low VOC product which is easy to apply, bare foot friendly and provides a safe, non slip surface for waterparks, marinas, decks, docks, stairs, ramps and a wide range of applications where safe footing is essential.



Soft Tread is proudly manufactured and distributed by **Acry-Tech Coatings, Inc.**

For more information about *Soft Tread* contact:
Acry-Tech Coatings, Inc.
7241 Haverhill Bus. Pkwy.
Suite #108
Riviera Beach, FL 33407
sales@acrytech
www.acrytech.com
(561) 841-2890

"Get a Grip on a Slippery World!"

Acry-Tech Coatings, Inc.

3601 NE 5th Ave • Ft. Lauderdale, FL 33334
800-771-6001 954-565-6001 954-565-2864 Fax
sales@acrytech.com www.acrytech.com
Design and Manufacture of Specialty Coatings

Baltimore Light Case Study

Commissioned in 1908, Baltimore Harbor Light was the last lighthouse constructed on the Chesapeake Bay, and the most challenging to build. From the time the original request for funding was made by the Lighthouse Board, in 1890, it would be eighteen years before the light was commissioned. The final cost of construction was well more than triple the amount originally requested. The light served the harbor for over 90 years and was in extreme disrepair. In 2006, the Baltimore Light was offered at auction and purchased by a group of private citizens who went to work to restore this grand old light.

(See their website at www.baltimorelight.org for all the details.)



The upper deck surrounding the light was cracked and weather beaten.

Rains poured through the cracks from the upper deck into the "Cellar" below, preventing storage of supplies and further deteriorating the concrete structure.



The new owners of the light wanted to stop the water leaks and also provide a safe walking surface on the upper deck. They contacted Acry-Tech and discussed the benefits of Soft Tread for creating a safe walkway around the light, even in inclement weather.

Acry-Tech suggested a vigorous surface preparation regimen including pressure washing, caulking and priming the surface. Once the preparation was complete, two coats of Soft Tread was rolled onto the decking in 2008.

The result is a safe, non slip surface for foot traffic, even when some of the visitors aren't wearing shoes! The Soft Tread is bare foot friendly while providing great traction when wet.

Plus... the deck no longer leaks and the "Cellar" is nice and dry.



Case Study

April 2011

Plaza West Regional Health Center

Topeka, Kansas

The Need:

This extended care facility provides a beautiful environment for their elderly guests. The bedrooms have VCT (Vinyl Composite Tile) which are waxed regularly and can be quite slippery when the guests are wearing slippers or stockings. The area immediately adjacent to the beds poses a threat of slippage as guests get out of bed and before they stand upright. The facility management had used glue down strips of non skid tape to provide a safer footing, but the strips were always peeling up at the edges, causing a potential for the guests to trip on the tape. Some options for a non skid coating were investigated but several options required aggressive sanding of the VCT, or the coating contained solvents that were smelly and unacceptable for use in the facility where air quality is extremely important. Other options required a long cure time that would prevent guests from re-entering their rooms for long periods of time. They needed a "Green" product that would adhere well to the VCT and be ready to use in a short time span.

The Test:

Plaza West personnel contacted Acry-Tech Coatings and presented the challenge. Acry-Tech suggested they use the Safe Tread Clear Non Skid Coating and test to see if it met all their requirements. The Plaza West maintenance personnel wanted to make it as easy as possible, so they simply cleaned the area with Spic 'n Span, their current cleaner that's low odor and effective for most of their general cleaning. They did NOT strip the wax from the VCT as had been required by other non skid coatings. They applied the Safe Tread Clear to the area adjacent to the guest bed and allowed it to cure for only 2 hours before they reopened the room and allowed foot traffic onto the area.

The acid test came only 24 hours after application. Maintenance staff took a power buffer with bristles to the area to see if it would stand up to rigorous cleaning within 24 hours and they were amazed to find NO DAMAGE to the coating.

The Solution:

Safe Tread Clear showed great adhesion to VCT even without stripping. There were NO ODORS, and the room was returned to service in only a couple hours. Cleaning the Safe Tread Clear was easy using their in-house procedures. Most importantly, guests of Plaza West Regional Health Center are getting a safer footing with greatly reduced potential for slip and fall accidents.

The Cost:

Safe Tread Clear provided another great benefit, the extremely low cost of safety. For less than \$0.35 per square foot, they were able to provide a level of safety that their guests deserve and appreciate.



Department of School Facilities

Wayne Crosby, Director

8045 Harriet Tubman Lane, Columbia MD 21044
Phone: 410 313 7084 Fax: 410 313 7093

Dan Hittenberger
Acry-Tech Coatings, Inc.
3601 NE 5th Ave • Oakland Park, FL 33334
954-565-6001 www.acrytech.com

November 28, 2011

Re: **Safe-Tread Coating**

Dan,

Good to talk with you again. I want to extend my sincere gratitude to you and your staff for the excellent services you provided for us over the past several years. We have been extremely satisfied with the performance of this product from start to finish. We have purchased over 300 gallons your **Safe-Tread** coating to complete a multitude of projects.

The main project that we started to use the **Safe-Tread** on is our aluminum ramps that we are using for the portable classrooms at our schools. I have attached several photos of before and after the coating process. We have found that even though the aluminum ramps have grooves extruded into them, they still have a tendency to get slippery in wet and icy conditions, especially when you get to the top and change direction, causing staff and students to fall and get injured. We used several ramps as test ramps utilizing several products on the market.

We decided that Safe-Tread was best product for our needs for several reasons.

- It was the **easiest to apply**; being single component and the grit texture already mixed in
- **Thickest to fill the grooves**; to get above the grooves and create a non directional grip pattern.
- **Durable**; we have not had any wear off.
- **Graffiti sprayed on it was removed** with a high temperature pressure washer and the **Safe-Tread stuck** and we didn't have to recoat
- Also was **most cost effective product available**. After we discovered that the **Safe-Tread was exceeding our performance expectations** we decided to coat all 125 ramps from top to bottom.

I have also used the **Safe-Tread** on a metal floor in a Walk-In Freezer. The freezer was shut down to dry out. The existing floor was prepped, coated and cured. I guess time will tell how long this will last a in -20F freezer.

Another application was used on two flights of black slate steps in an elementary school that were slippery for the staff and students to use. I prepped and coated the front 4" of the stair tread. All of the Staff and students rave about how they perform as well as the color difference so the individual steps can be seen well.

Thanks again for the great product and service that you provide.

Jonathan Nail
Leadman – Paint/Floor
Building Services Department
Howard County Public School System, Maryland
410-313-7084



Building Services, Herb Savje, Manager
8045 Harriet Tubman Lane Columbia MD 21044
Phone 410 313-7084 Fax 410 313 7093

Custodial Services, Olivia Claus, Manager
8800 North Ridge Road, Ellicott City MD 21043
Phone 410 313 2595 Fax 410 313 2598

Grounds Services, Keith Richardson, Manager
8800 North Ridge Road, Ellicott City, MD 21043
Phone 410 313 2577 Fax 410 313 2599

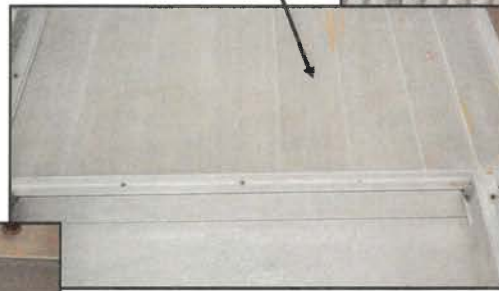
Energy Management Services
Diane Sweeney, Specialist
8045 Harriet Tubman Lane, Columbia MD 21044
Phone 410 313 7024 Ext. 259 Fax 443 583 1272

Integrated Pest Management Services
Mark Hardin, IPM Specialist
10920 Route 108, Ellicott City, MD 21042
Phone 410 313 7180 Fax 410 313 6989

Howard County Public Schools in Maryland has metal ramps for their portable classrooms.

The metal ramps have raised ribs to help improve traction.

But, when wet the ramps were very slippery. Students and teachers have slipped and fallen on these slippery ramps and some were injured.



Safe Tread provides a safe, non slip surface.

The maintenance personnel applied **Safe Tread** to the ramp surfaces and found that the **Safe Tread** filled the grooves and provided a safe footing for the students and teachers.

Now the rain, snow and ice are no problem.

They even found that graffiti was easy to remove from the **Safe Tread** surface with a hot water pressure washer and the **Safe Tread** wasn't harmed!



Safe Tread Applied



Safe Tread creates a grippy surface for maximum safety



**A safe footing—
Economically
With Safe Tread!**