

PaveSafe Pavers

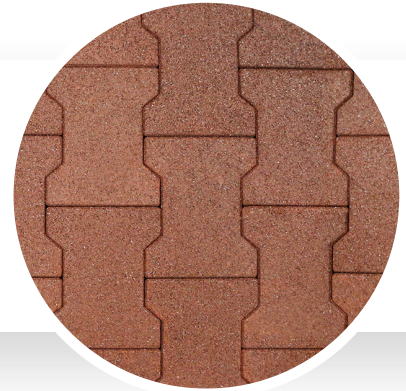
Outdoor & Equine Surfacing

PRODUCT ATTRIBUTES

- **24 or 44.5mm Vulcanized Composition Rubber (VCR) Paver**
Provides excellent durability and slip resistance



Made from Vulcanized Composition Rubber (VCR) PaveSafe Pavers are easy to install and provide superior coefficient of friction in both wet and dry conditions. This unique paver visual enhances the appearance of any surface and makes them ideal for outdoor walking paths and terraces.



APPLICATIONS

- Equine
- Outdoor
- Paths
- Terraces

BENEFITS

- Excellent shock absorption and protection
- Outstanding performance and longevity
- Slip-resistant when wet
- Low cost and environmentally-friendly
- Easy to install and maintain
- Can be adhered or loose laid depending on substrate

NOMINAL DIMENSIONS

Talk to your local sales rep to determine availability, pricing, minimums, and lead times.



- 24mm (.94") x 7.75" (19.7cm) x 6.25" (15.88cm)
- 44.5mm (1.69") x 7.75" (19.7cm) x 6.25" (15.88cm)

Not available in Gray

Note: 3.42 pavers per sq. ft.

NRG[®]

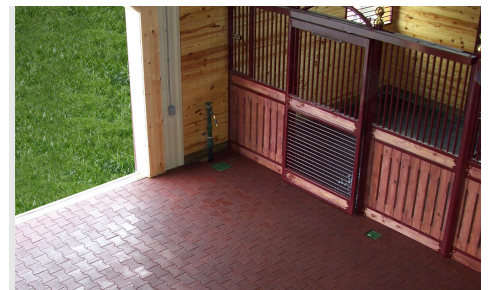


Force Reduction: 50.67%
Absorption of impact energy



Energy Restitution: 51.60%
Useful return of impact energy

Typical Deltec Field Tester Results for 44.5mm option



PaveSafe Pavers

COLOR SWATCHES



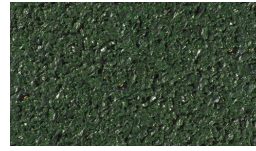
Terra Cotta Red



Solid Black

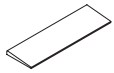


Slate Grey



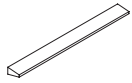
Forest Green

ACCESSORIES



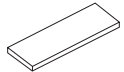
PaveSafe Reducer (use with 44.5mm):

12" (30.48cm) x 39" (.99m)
Thickness: 1 11/16" (43mm)



PaveSafe Beveled Edge Reducer (use with 24mm):

2.5" (6.35cm) x 39" (.99m)
Thickness: 15/16" (24mm)



PaveSafe Border Edge (use with 44.5mm):

10" (25.4cm) x 39" (.99m)
Thickness: 2" (50.8mm)

Distributed by



800-842-2914

bob@diamond-safety.com
www.diamond-safety.com