



# Stall & Kennel Mats

## Features

- Insulates against cold and dampness
- Vulcanized (not glued and pressed)
- Won't roll, buckle, or curl
- Completely non-absorbent
- Available in four colors
- Custom sizing available
- Increased safety and excellent traction
- Prevents lameness and injury
- Antibacterial/antifungal
- Reduces bedding expenses



**Stall and kennel pads** from Humane Manufacturing are the **diamond standard** of horse mats, providing the highest **quality and comfort** available for your animals. Our mats will never pack or crush like sand or crumb-filled beds, involve no liquids to freeze or leak, are completely non-absorbent for easy cleanup, and are simple to install in any environment. Supreme Comfort for your animals, supreme quality for you... from **Humane Manufacturing**.

## PRODUCT SPECIFICATIONS

dimensions : surface : base

### Standard Straight-Edge Mats

48" x 72" x .375"	Diamond	Smooth
48" x 72" x .5"	Diamond	Smooth
48" x 72" x .75"	Diamond	Smooth
48" x 72" x .375"	Button	Smooth
48" x 72" x .5"	Button	Smooth

### Anti-Fatigue Mats

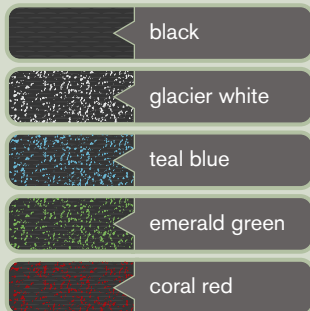
48" x 72" x .5" (4 bevel sides)	Diamond	Waffle
24" x 72" x .5" (3 bevel sides)	Diamond	Waffle
48" x 72" x .75" (4 bevel sides)	Diamond	Waffle
24" x 72" x .75" (3 bevel sides)	Diamond	Waffle

### Wall Liners (round pen & corral mats)

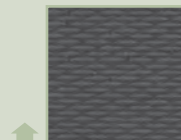
48" x 72" x .375" (14 Grommets)	Diamond	Smooth
48" x 96" x .375" (9 Grommets)	Diamond	Smooth
48" x 96" x .375" (11 Grommets)	Diamond	Smooth

## options...

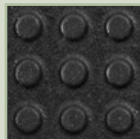
Pads from Humane are available in a variety of color and surfaces.



Our **LokTuff** interlocking edge design can be used on diamond or button surface mats, as well as anti-fatigue matting.



surface: **diamond**



surface: **button**



base: **waffle**

## sizes...

	Standard Stall Size	Actual Interlocked Size
We can custom-cut	10' x 10' x .75"	9' 10" x 9' 10.875"
<b>any size</b> stall or area!	10' x 12' x .75"	9' 10.625" x 11' 10"
	12' x 12' x .75"	11' 10" x 11' 10.25"

Our products are **99% recycled** and **100% American Made**.



**HUMANE**  
EQUINE PRODUCTS GROUP