



2017 PRODUCT CATALOG



Perfection Floor Tile®

"The Most Trusted Name in Interlocking Floors"



Introducing

**INTERLOCKING
LUXURY VINYL TILE**

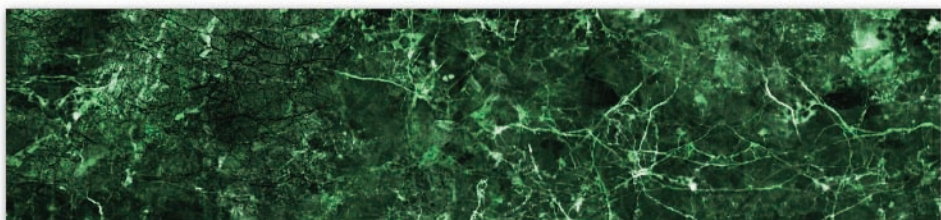
- Size: 20" x 20" Tile
- Thickness: 5mm
- 6 Tiles Per Carton
- 16.7 Sq. Ft. Per Carton
- 10-Year Warranty
- Hidden Interlock
- Easy Fitting Tabs
- Straight Line Joints
- Durable Satin Finish
- Stain Resistant
- Low Maintenance



GEMSTONE COLLECTION

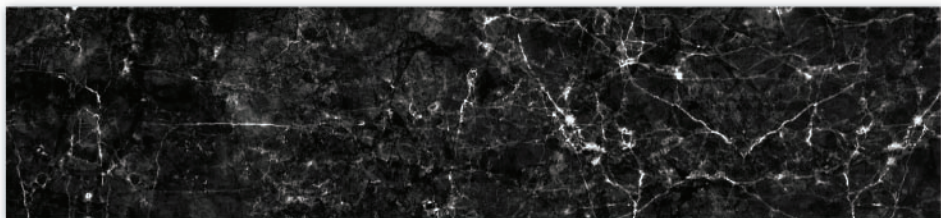
*Exuding grace, elegance, and style.
These beautiful tiles are warmer to the touch,
kinder to your feet and easy to care for
in any room of your home.*

WHITE MARBLE
NS585WM55



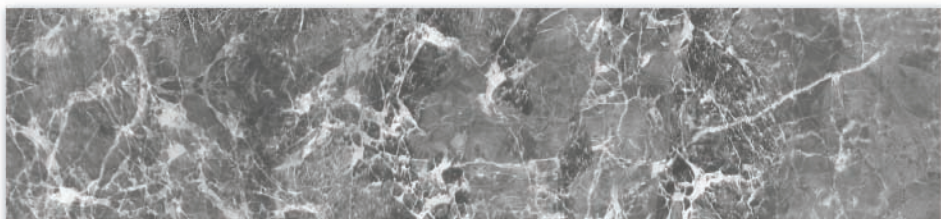
EMERALD GREEN

NS585EM55



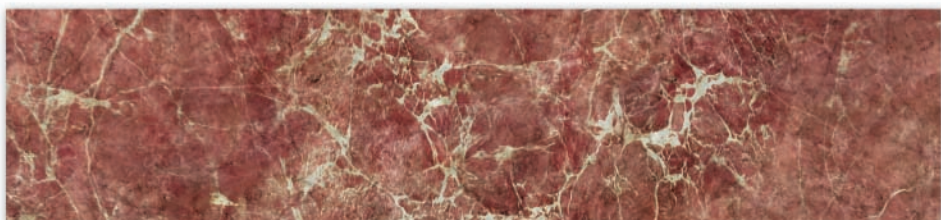
CAMBRIAN BLACK

NS585CB55



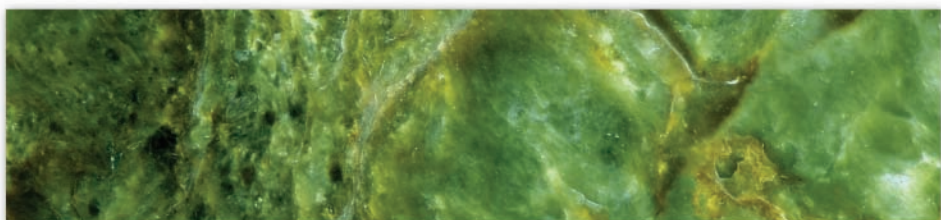
GRAY MARBLE

NS585GM55



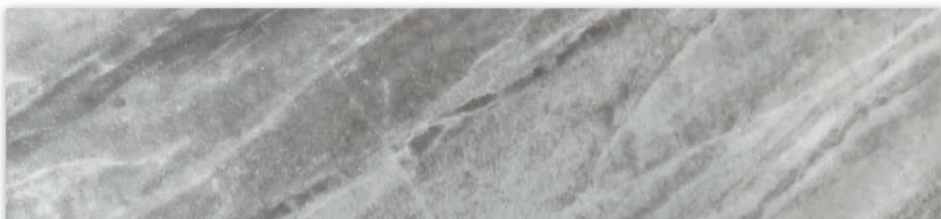
ROSE MARBLE

NS585RM55



VERDE STONE

NS585VS55



BORDER OPAL

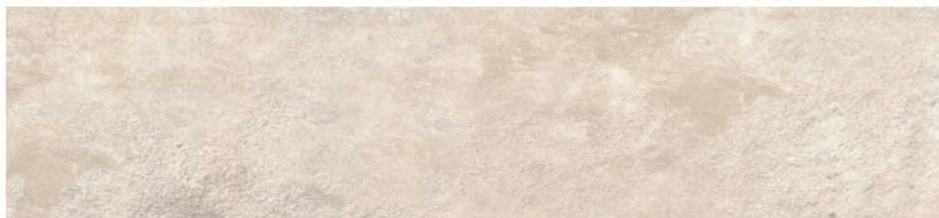
NS585BO55



STONECRAFT COLLECTION

*Our best-selling designs strike an elegant balance
between rich texture and vibrant colors,
bringing a dramatic style to your home.*

SANDSTONE GRANITE
NS585SG55



FIELDSTONE

NS585FS55



ATLANTIC SLATE

NS585AS55



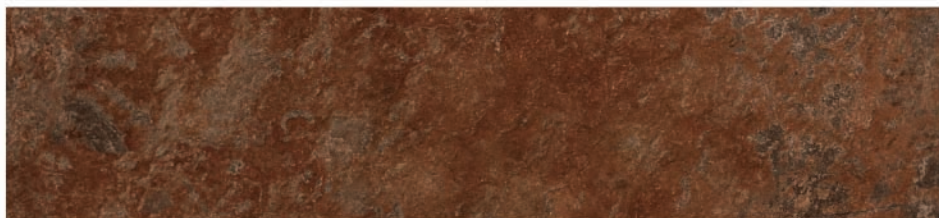
PACIFIC SLATE

NS585PC55



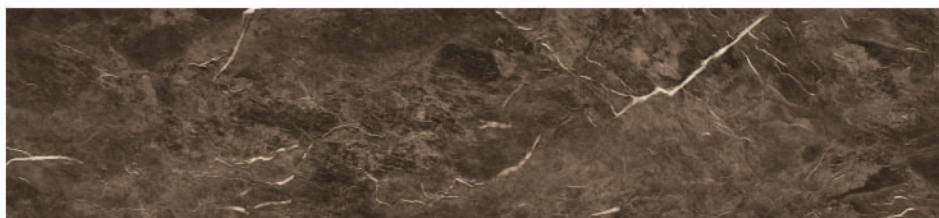
IMPERIAL GOLD

NS585IG55



SEDONA SLATE

NS585SS55



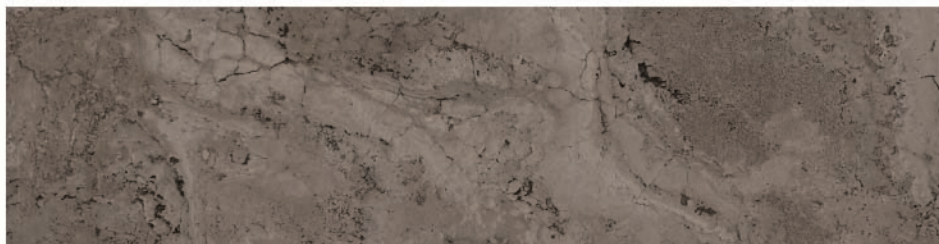
NEW ENGLAND

NS585NE55



TRAVERTINE COLLECTION

Bring the beauty of nature into your home with our Travertine Collection. Each tile features an attractive eroded surface interfused with graceful veining.



AMTICO

NS585AC55



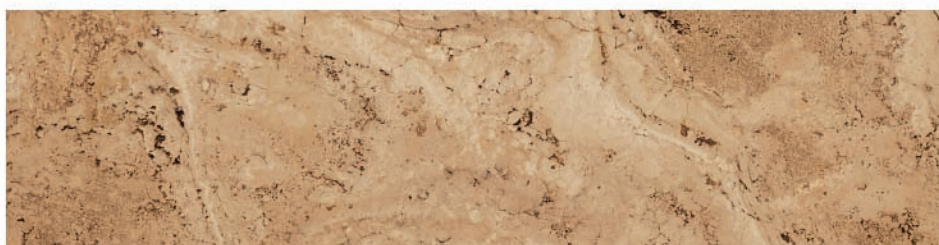
SILVER

NS585SR55



ROSE

NS585RS55



SIENNA

NS585SN55



CAMEL

NS585CL55

The image features two identical potted plants, likely bromeliads, with long, arching green leaves and a central flower spike. They are housed in simple, white, cylindrical pots. The plants are positioned on a dark-stained wooden table with horizontal slats. The background is a wall of large, rectangular stone tiles with a prominent wood-grain pattern, characteristic of the 'Petrified Wood' collection. The lighting is soft and even, highlighting the textures of the plants, the wood, and the stone.

STONE CREEK COLLECTION

*Nature's beauty becomes alive
with a unique weathered look,
a gorgeous blend of organic
colors and clefts.*



MATTA MATTA

NS585MM55



CANYON STONE

NS585CY55



MALTA STONE

NS585MT55



CHEYENNE SHALE

NS585SH55



STRATA

NS585ST55



SMOKEY MOUNTAIN

NS585SY55



MASTER MOSAIC COLLECTION

Mosaic designs bring a classic and elegant style into your home - gaining popularity in contemporary home décor due to its unique look and timeless appeal.

CHEVRON BLACKSTONE
DR586BS55



CHEVRON GRAYSTONE

DR586GS55



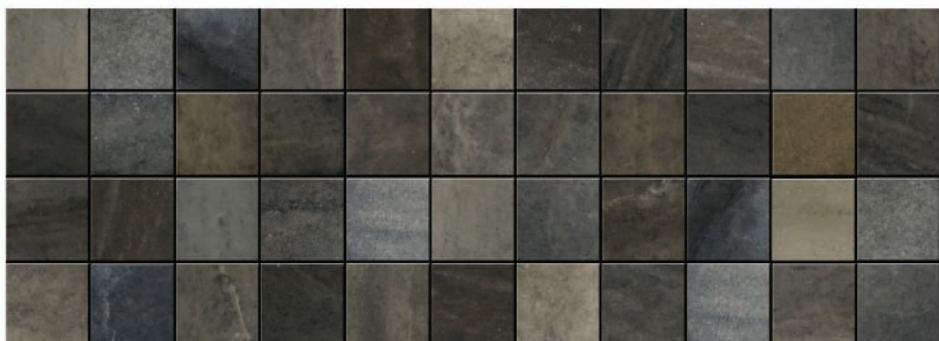
CHEVRON ENDSTONE

DR586ES55



CASTLE STONE

NS585CN55



STONEHENGE MOSAIC

NS585SM55



CLASSIC WOOD COLLECTION

*Striking tonal patterns and contrasting visuals.
The Classic Wood Collection fits with today's home
styles, from contemporary to traditional.*

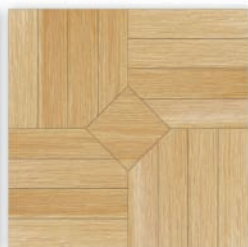
CORK
WD585CK55



BIRCH
WD585BH55



BORDEAUX BIRCH
WD585XB55



PARQUET BIRCH
WD585QB55



DRIFTWOOD
WD585DW55



BORDEAUX DRIFTWOOD
WD585XD55



PARQUET DRIFTWOOD
WD585QD55



ELM
WD585HY55



BORDEAUX ELM
WD585XH55



PARQUET ELM
WD585QH55



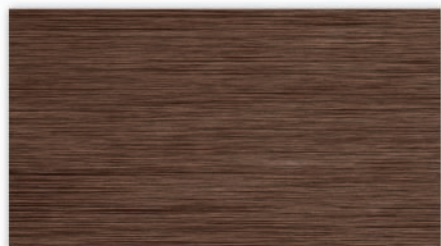
MAPLE
WD585ML55



BORDEAUX MAPLE
WD585XM55



PARQUET MAPLE
WD585QM55



WALNUT
WD585WW55



BORDEAUX WALNUT
WD585XW55



PARQUET WALNUT
WD585QW55

MYSTIC PLANK COLLECTION

*Reminiscent seaport looks that transcend through time.
The Mystic Plank Collection comes in a variety of colors that
will blend harmoniously with rustic to modern style homes.*

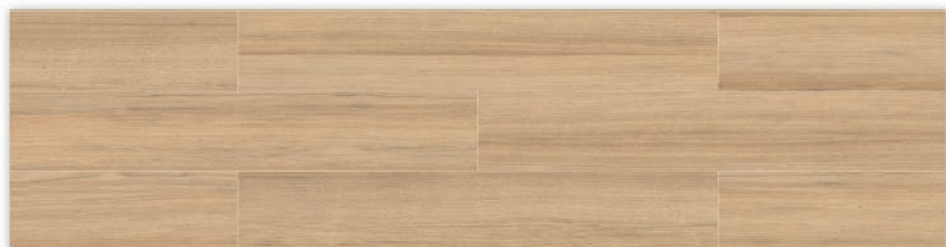


OLD PINE PLANK
WD585PP55



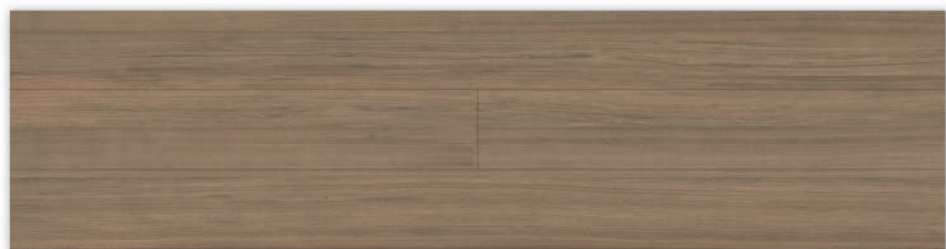
BAMBOO PLANK

WD585PO55



APPLEWOOD PLANK

WD585PA55



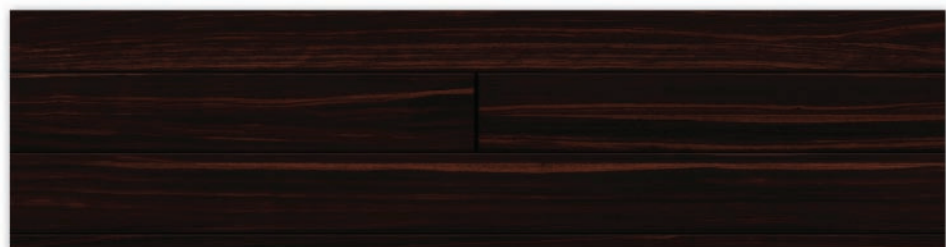
BEECHWOOD PLANK

WD585PB55



GRAY OAK PLANK

WD585PG55



MAHOGANY PLANK

WD585PM55



DEADWOOD COLLECTION

*Bring the rough and tumble of the Old West
to spice up the look and feel of your home.*



DEATH VALLEY

WD585DV55



BARNWOOD

WD585DB55



MILLHOUSE

WD585DM55



My Space COLLECTION

Floor designs that lay a world of possibilities at your feet.

BUBBLES
DR586BB55



PRAIRIE GRASS
DR586PG55



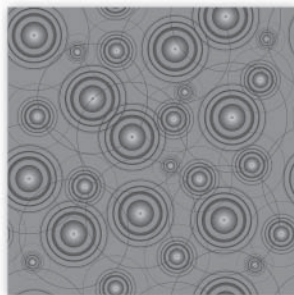
HEMP
DR586HP55



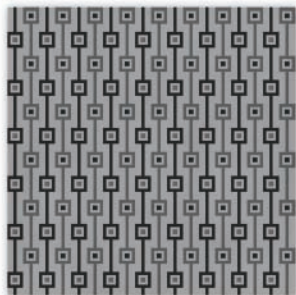
GREEN GRASS
DR586GG55



CAMO AUTUMN
DR586CA55



ORBIT
DR586OS55



TAILOR GRAY
DR586TG55



AMERICANA
DR586SS55

(TILE 1 OF 2)



AMERICANA

(TILE 2 OF 2)

FOR LASTING BEAUTY, COMFORT, AND UNMATCHED PERFORMANCE, PERFECTION FLOOR TILE DELIVERS. USING STATE-OF-THE-ART TECHNOLOGY OUR INTERLOCKING TILE SNAPS TOGETHER WITH PRECISION.

- COMFORTABLE UNDER FOOT
- ANTI-FATIGUE AND NON-SLIP
- STABILIZES FLOOR TEMPERATURES
- SOUND ABSORBENT
- HYPOALLERGENIC
- WATER RESISTANT
- SCRATCH RESISTANT
- ANTI-STATIC
- NO TOXINS
- NO ODOR
- NON-POROUS
- REUSABLE AND RECYCLABLE
- EASY TO INSTALL - NO GLUE NEEDED
- EASY MAINTENANCE
- 10 YEAR WARRANTY ON LUXURY VINYL TILE
- 10 YEAR WARRANTY ON LIGHT COMMERCIAL
- 25 YEAR WARRANTY ON ALL-PURPOSE-FLOORING
- ALWAYS MADE IN THE USA

PERFECTION FLOOR TILE MANUFACTURES VINYL, INTERLOCKING, FLOATING TILES RIGHT HERE IN THE UNITED STATES. OUR TILES ARE BEAUTIFUL, COMFORTABLE AND DURABLE. BUYERS ARE MOTIVATED BY OUR TRENDY DESIGNS, VIBRANT COLOR TEMPLATES, AND TEXTURES INSPIRED BY NATURE. PATTERNS INCLUDE MARBLE, STONE, TRAVERTINE AND WOOD.

OUR INTERLOCKING VINYL FLOOR TILE CREATES A SOLID FLOATING FLOOR USING NO ADHESIVES OR GLUE THAT MAY BE AN IRRITANT AND CAUSE RESPIRATORY PROBLEMS, INFLAMMATION OR OTHER HEALTH ISSUES. PERFECTION FLOOR TILE IS MADE FROM VINYL WHICH IS COMPOSED OF INGREDIENTS FROM NATURE: CHLORINE, COMMON SALT, AND ETHYLENE FROM NATURAL GAS. WE ADD NO LEAD, FORMALDEHYDE OR OTHER TOXIC CHEMICALS FOUND IN MANY OTHER FLOORING PRODUCTS. BY EMPLOYING FURTHER CHEMISTRY USING A PHTHALATE FREE CLASS OF SOFTENERS, OUR TILE IS FLEXIBLE, COLORFUL, ENERGY EFFICIENT AND ENVIRONMENTALLY RESPONSIBLE.

OUR TILES ARE EASY TO INSTALL. SIMPLY: CLEAN, MEASURE, PLACE, TRIM AND ENJOY!

ALL-PURPOSE INTERLOCKING TILE

LEATHERLOOK

- Size: 20" x 20" Tile
- Thickness: 5mm
- 6 Tiles Per Carton
- 16.7 Sq. Ft. Per Carton
- Satin Finish
- Life Time Residential Warranty
- Straight Line Joints
- Rounded Edges
- Quiet, Flexible, Durable
- Allows Checkerboard Layouts with Clean, Straight Lines
- Low Maintenance

HOMESTYLE SLATE

- Size: 20" x 20" Tile
- Thickness: 5mm
- 6 Tiles Per Carton
- 16.7 Sq. Ft. Per Carton
- Textured Finish
- Life Time Residential Warranty
- Straight Line Joints
- Rounded Edges
- Quiet, Flexible, Durable
- Allows Checkerboard Layouts with Clean, Straight Lines
- Low Maintenance

LEATHERLOOK

These tiles feature a palette of bold designer colors. They are comfortable underfoot, anti-fatigue, and have a beautiful textured finish.

GRAY RHINO
LL550DG50
&
ELEPHANT
LL550LG50



RAWHIDE
LL550RH55



CAMEL
LL550CL55



BUCK
LL550BC55



BLACK RHINO
LL550BK55



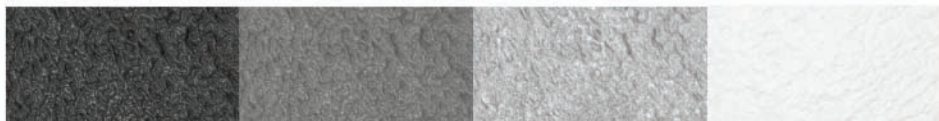
GRAY RHINO
LL550DG55



ELEPHANT
LL550LG55



OSTRICH
LL550OH55

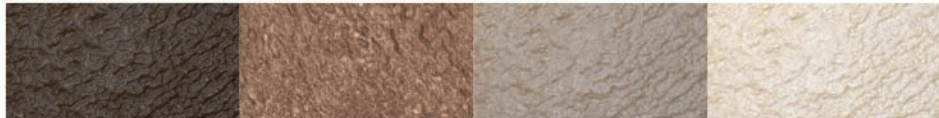


BLACK
HS552BK50

GRAPHITE
HS552DG50

LIGHT GRAY
HS552LG50

WHITE
HS552WT50

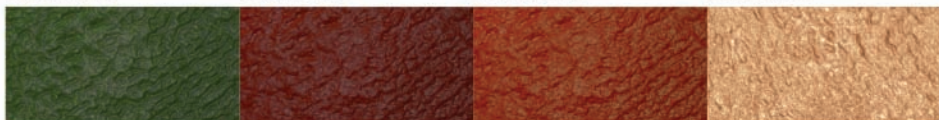


ANTIQUÉ BROWN
HS552AB50

CHESTNUT
HS552CT50

BEIGE
HS552BG50

SANDSTONE
HS552SN50



HUNTER GREEN
HS552HG50

ROSEWOOD
HT552RW50

TERRACOTTA
HS552TT50

PIAZZA CLAY
HS552PC50



HOMESTYLE SLATE

*A beautiful stone texture finish with hidden interlock.
Water resistant seams make it ideal for kitchens, bathrooms,
basements, and other rooms in your home.*

HUNTER GREEN
HS552HG50
&
WHITE
HS552WT50

COIN & DIAMOND PLATE

The original Flexi-Tile. This tile can be used throughout the home, including work rooms, utility rooms, as well as, light commercial installations. It makes a great gym floor!





BLACK COIN: CN540BK45
BLACK DIAMOND: DP450BK45



DARK GRAY COIN: CN540DG45
DARK GRAY DIAMOND: DP450DG45



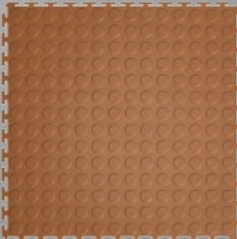
LIGHT GRAY COIN: CN540LG45
LIGHT GRAY DIAMOND: DP450LG45



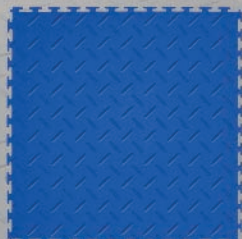
WHITE COIN: CN540WT45
WHITE DIAMOND: DP450WT45



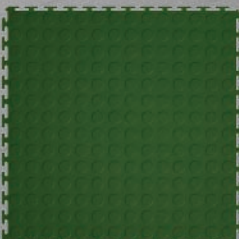
BEIGE COIN: CN540BG45
BEIGE DIAMOND: DP450BG45



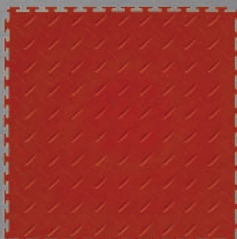
TAN COIN: CN540TN45
TAN DIAMOND: DP450TN45



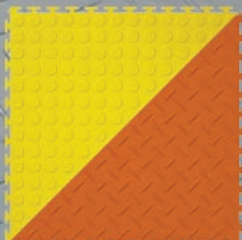
BLUE COIN: CN540DB45
BLUE DIAMOND: DP450DB45



GREEN COIN: CN540FG45
GREEN DIAMOND: DP450FG45



TERRACOTTA COIN: CN540TT45
TERRACOTTA DIAMOND: DP450TT45



YELLOW COIN: CN540YW45
ORANGE DIAMOND: DP450OG45

- Size: 20.5" x 20.5" Tile
- Thickness: 5mm
- 8 Tiles Per Carton
- 23.2 Sq. Ft. Per Carton
- Corner and Edges Available (20.5" - 4 Per Box)
- Life Time Residential Warranty
- Tough, Durable Surface
- Satin Finish
- Water Resistant
- Allows Checkerboard Layouts
- Same Color Tiles Create Virtually Seamless Floor
- Low Maintenance

COMMERCIAL

These tiles are rigid and durable, providing an extremely durable floor for all but the most demanding commercial installations.

- Size: 20.5" x 20.5" Tile
- Thickness: 5mm
- 8 Tiles Per Carton
- 23.2 Sq. Ft. Per Carton
- Corners & Edges Available
- 20.5" - 4 Per Carton
- Withstands weight up to 3,000 lbs psi
- 15-Year Warranty
- Light Textured Pattern
- Rigid Tile
- Anti-Static
- Anti-Scuff Finish
- Low Maintenance



BLACK
CT540BK50

DARK GRAY
CT540DG50

INDUSTRIAL

*Our Toughest Tile. This floor can handle forklift traffic, landing gear, and heavy-duty industrial wear and tear.
Please consult us regarding your special needs.*

- Size: 20.5" x 20.5" Tile
- Thickness: 7mm
- 6 Tiles Per Carton
- 17.5 Sq. Ft. Per Carton
- Corners & Edges Available
- 20.5" - 4 Per Carton
- Withstands High Intensity Weight
- May be glued down for
 - FORK LIFT 20,000 LBS
 - 747 HANGERS
- 15-Year Warranty
- Anti-Static
- Chemical Resistance
- Light Textured Pattern
- Rigid Tile
- Anti-scuff finish
- Low maintenance



BLACK
IT540BK70

DARK GRAY
IT540DG70



Perfection Floor Tile

A floating floor installation is a fast and easy DIY project. There's no glue, staples or nails. Tiles attach to each other through a key and lock design leaving no lingering adhesive fumes. This installation method delivers a tight fit, with no spacing problems and no waiting for the adhesive to dry. In a floating installation, tiles respond to temperature changes as a unit, expanding toward the walls or contracting away. A properly installed floating floor should not bow or buckle in a moist environment or develop gaps under dry conditions.

Our floating floors let you put the beauty of pure vinyl in moisture-prone rooms, like basements, where a solid floor is not recommended.

Our engineered vinyl floors are pure vinyl that are manufactured in the US for enhanced stability. The inner core consists of one single layer of vinyl that provides additional strength and makes the tile resistant to changes in temperature and humidity.



Each order is custom made. Slight variations are possible, making each order unique.
Product availability is subject to change without notice.