

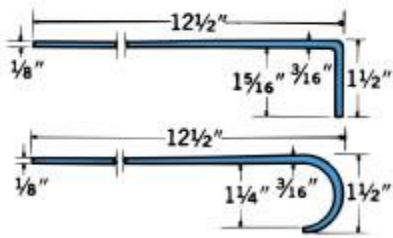
Rubber Tread No.750, 700, 725 Smooth Flat Surface

Rubber Tread No. 250, 200, 225, 250VI, 200VI, 225VI Flat Surface with Grit Strips



Smooth flat surface stair treads offer long wear; easy cleaning; reduce noise; marbled colors show less wear. Three styles to fit almost any stairway. Meets Flame Spread Rating of 75 or less using ASTM-E-84 Test. All treads have a sanded back for better adhesion; contain no asbestos. Install with Musson No. 400 Neoprene Contact, No. 300 Water-base Contact Adhesive or No. 560 Rubber Flooring adhesive.

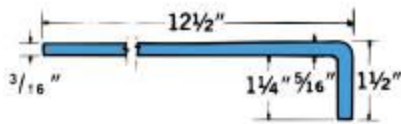
No. 750 — SERVICE WEIGHT



SPECIFICATIONS:

Furnish and install Musson #750 Molded Rubber Smooth Flat Surface Stair Treads, 3/16" thick, tapering to back edge, 12-1/2" deep, with square (or curved) molded nose. Standard sizes: 36", 42", 48", 54", 60" or 72", Select standard color from Color Series I or Color Series II.

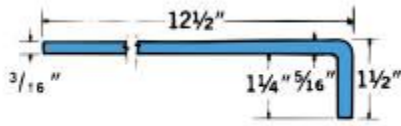
No. 700 — HEAVY DUTY



SPECIFICATIONS:

Furnish and install Musson #700 Molded Rubber Smooth Flat Surface Stair Treads 5/16" thick, tapering to back edge, 12-1/2" deep, with square molded nose. Standard sizes: 36", 42", 48", 54", 60" or 72"; Select standard color from Color Series I.

No. 725 — Heavy Duty, Long Nose



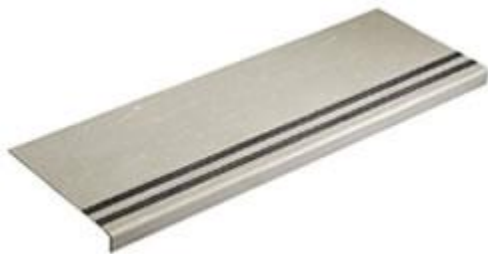
SPECIFICATIONS:

Furnish and install Musson #725 Molded Rubber Smooth Flat Surface Stair Treads, 5/16" thick, tapering to back edge, 12-1/2" deep with a 1-7/8" long adjustable square nose; to fit pan-filled or molded concrete steps. Standard sizes: 36", 42", 48", 54", 60" or 72"; Select standard color from Color Series I. Adjusta Nose will easily adjust and adhere to steps with return angle nosing between 90° and 60°; allows for good fit on stairways designed for safety or aesthetics.

Grit Strips

Abrasive mineral coated Grit-Strips recessed the length of tread at impact area. Helps prevent slipping. Flat surface Grit-Strip treads offer long wear; easy cleaning; reduce noise. Meets Flame Spread Rating of 75 or less using ASTM-E-84 Test. All treads have a sanded back for better adhesion; contains no asbestos.

Grit Strip No. 250 - Service Weight



Specifications:

Furnish and install #250 Molded Rubber Grit-Strip Stair Treads from Musson Rubber Co., 3/16" thick; 12-1/2" deep; square (or curved) nose. Two Black* 3/4" abrasive Grit-Strips inlaid in tread 1" from front edge. Treads shall be molded of top quality homogenous rubber compound; color throughout thickness; free of odors or imperfections which might impair service. Select standard length of: 36", 42", 48", 54", 60" or 72". Select standard color from Color Series I or Color Series II.

Grit Strip No. 200 - Heavy Duty



Specifications:

Furnish and install #200 Molded Rubber Grit-Strip Stair Treads from Musson Rubber Co., 5/16" thick; 12-1/2" deep; square nose. Two Black* 3/4" abrasive Grit-Strips inlaid in tread, 1" from front edge. Treads shall be molded of top quality homogenous rubber compound; color throughout thickness; free of odors or imperfections which might impair service. Select standard length of: 36", 42", 48", 54", 60" or 72". Select standard color from Color Series I.

Grit Strip No. 225 - Heavy Duty Long Nose



Specifications:

Furnish and install #225 Molded Rubber Grit-Strip Stair Treads from Musson Rubber Co., 5/16" thick; 12-1/2" deep; 1-7/8" long adjustable square nose. Two Black* abrasive Grit- Strips inlaid in tread, 1" from front edge. Treads shall be molded of top quality homogenous rubber compound; color throughout thickness; free of odors or imperfections which might impair service. Select standard length of: 36", 42", 48", 54", 60" or 72". Select standard color from Color Series I.

Grit-Strip for Visually Impaired.

An abrasive mineral coated Grit-Strip is recessed length of tread at impact area. Meets specs for contrasting color to alert Visually Impaired. Flat surface offers long wear; easy cleaning. Meets Flame Spread Rating of 75 or less using ASTM-E-84 Test. All treads have a sanded back for better adhesion; contains no asbestos.

Grit Strip No. 250VI - Service Weight



Specifications:

Furnish and install #250VI Molded Rubber Visually Impaired Grit-Strip Stair Treads from Musson Rubber Co., 3/16" thick; 12-1/2" deep; square (or curved) nose. One Black* 2" wide abrasive Grit-Strip inlaid in tread 1" from front edge. Treads shall be molded of top quality homogenous rubber compound; color throughout thickness; free of odors or imperfections which might impair service. Select standard length of: 36", 42", 48", 54", 60" or 72". Select standard color from Color Series I or Color Series II.

Grit Strip No. 200VI - Heavy Duty



Specifications:

Furnish and install #200VI Molded Rubber Visually Impaired Grit-Strip Stair Treads from Musson Rubber Co., 5/16" thick; 12-1/2" deep; square nose. One Black* 2" wide abrasive Grit-Strip inlaid in tread, 1" from front edge. Treads shall be molded of top quality homogenous rubber compound; color throughout thickness; free of odors or imperfections which might impair service. Select standard length of: 36", 42", 48", 54", 60" or 72". Select standard color from Color Series I.

Grit Strip No. 225 VI - Heavy Duty Long Nose



Specifications:

Furnish and install #225 VI Molded Rubber Visually Impaired Grit-Strip Stair Treads from Musson Rubber Co., 5/16" thick; 12-1/2" deep; 1-7/8" long adjustable square nose. One Black* 2" wide abrasive Grit- Strip inlaid in tread, 1" from front edge. Treads shall be molded of top quality homogenous rubber compound; color throughout thickness; free of odors or imperfections which might impair service. Select standard length of: 36", 42", 48", 54", 60" or 72". Select standard color from Color Series I.

Color Series I



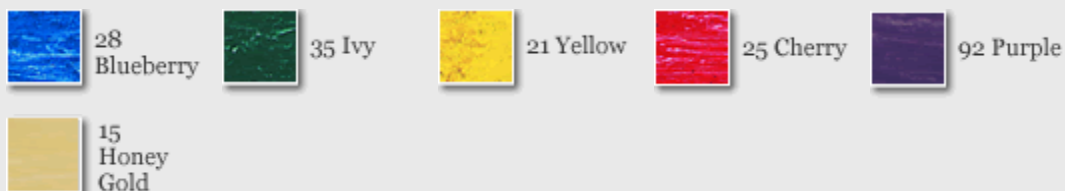
All colors must be selected from actual samples

Color Series II



All colors must be selected from actual samples

Primary Color Series



Available in the following items only:
500L, 1000-T, 750, 250, 250VI and 505CR;
Minimum quantities may be required.