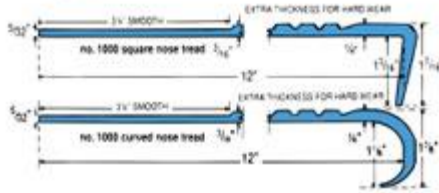


Rubber Tread No.1000



An attractive, easy to clean, horizontal bar pattern, with a tapered return nose for better fit. Extra thick front edge tapers to smooth rear border, makes cleaning easier. Meets Federal Specs. RR-T-650E and ZZ-T-001237 (GSA-FSS). Install with Musson No. 400 Neoprene Contact, No. 300 Water-base Contact Adhesive or No. 560 Rubber Flooring adhesive.

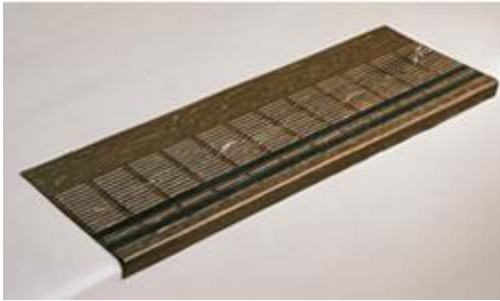


Recommended for use in churches, apartments, stores, medical buildings, bowling alleys, offices, shopping centers, dormitories, institutions and clubs.

SPECIFICATIONS:

Furnish and install No. 1000 Horizontal Bar Design Stair Treads from Musson Rubber, Akron, Ohio; 1/4" thick, tapering to back edge; 12" deep. Treads shall have a 1-3/16" square nose (or curved nose); a Flame Spread Rating of 75 or less using ASTM-E-84 Test; a sanded back to assure proper adhesion; contain no asbestos fiber; molded of top quality homogeneous rubber compound, color extending throughout thickness; free from objectionable odors, blisters, cracks or imperfections which might impair serviceability. Select standard length of 36", 42", 48", 54", 60" or 72"; (54", 60" and 72" available in square nose only.) Select standard color from Color Series I or Color Series II . (Curved nose available only in Color Series I.)

Grit Strip Horizontal Bar Design Tread No. GS1000



Available with two 3/4" wide, long wearing mineral coated Grit Strips recessed the full length of the tread at impact area. Helps prevent slipping. Design surface with Grit Strips offer added safety and longer wear. All treads have color through entire thickness. All treads meet Flame Spread Rating of 75 or less using ASTM-E-84 Test.

SPECIFICATIONS:

Furnish and install No. GS1000 Molded Rubber Grit Strip Horizontal Bar Design Stair Treads from Musson Rubber Co. 1/4 " thick; 12" deep; with 1 3/4" square nose. Two black 3/4" wide abrasive Grit Strips inlaid in tread, 1" from front edge. Treads shall have a sanded back for proper adhesion; contain no asbestos; molded to top quality homogeneous rubber compound; free of objectionable orders or imperfections which might impair service. Select standard length of : 36", 42", 48", 54", 60" or 72". Select standard color from Color Series I, Color Series II or Color Series III. Square Nose only.

- Grit Strip inserts are also available in Brown, Gray, Beige, Safety Yellow or Safety Red at an extra cost.

No. GS1000VI Visually Impaired



Available with one 2" wide, long wearing mineral coated Grit Strip recessed the full length of the tread at impact area. Helps prevent slipping. Design surface with Grit Strips offer added safety and longer wear. All treads have color through entire thickness. All treads meet Flame Spread Rating of 75 or less using ASTM-E-84 Test. Square nose only.

SPECIFICATIONS:

Furnish and install No. GS1000VI Molded Rubber Visually Impaired Grit-Strip Horizontal Bar Design Stair Treads from Musson Rubber Co., 1/4" thick; 12" deep; 1-3/16" square nose. One Black* 2" wide abrasive Grit-Strip inlaid in tread, 1" from front edge. Treads shall have a sanded back for proper adhesion; contain no asbestos; molded of top quality homogenous rubber compound free of objectionable odors or imperfections which might impair service. Select standard length of: 36", 42", 48", 54", 60" or 72". Select standard color from Color Series I or Color Series II.

- Grit Strip inserts are also available in Brown, Gray, Beige, Safety Yellow or Safety Red at an extra cost.

Color Series I



All colors must be selected from actual samples

Color Series II



All colors must be selected from actual samples