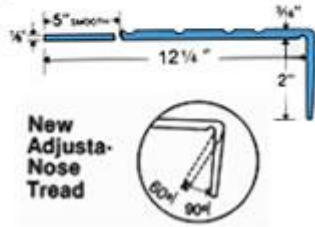


## Rubber Tread No.626



A New Design Nose - will easily adjust and adhere to steps with return angle nosings between 90° and 60°; allows good fit on stairways designed for safety or aesthetics.

Our medium gauge Diamond Design Tread with extra long nosing for pan-filled or molded concrete steps. Not only will this 2" depth completely cover pan-filled step nosing, it adjusts from 90° to 60°, to accommodate stairways with return angle nosings. Makes stairways safer for visually impaired and handicapped. Fine for all but heaviest traveled stairways. Square Adjustable Nose. Meets Federal Specs RR-T-650E and ZZ-T-001237 (GSA-FFS).

Install with No. 400 Neoprene Contact Adhesive, No. 300 Water-based Contact Adhesive or No. 560 Rubber Flooring Adhesive. Use bead of No. 110 Epoxy Stair Caulk inside where nose joins tread.

### SPECIFICATIONS:

Furnish and install No. 626 Diamond Design Stair Treads from Musson Rubber, Akron, Ohio; 3/16" thick, tapering to back edge, 12-1/4" deep. Treads shall have a 2" adjustable square nose; a Flame Spread Rating of 75 or less using ASTM-E-84 Test; a sanded back to assure proper adhesion; contain no asbestos fiber; molded of top quality homogeneous rubber compound, color extending throughout thickness; free from objectionable odors, blisters, cracks or imperfections which might impair serviceability. Select standard length of 36", 42", 48", 54", 60" or 72"; Select standard color from Color Series I or Color Series II.

## Grit Strip Diamond Design Tread No. GS626



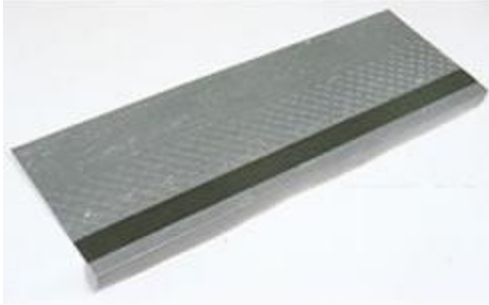
Available with 2 3/4" wide, long wearing mineral coated Grit Strips recessed the full length of the tread at impact area. Helps prevent slipping. Design surface with Grit Strips offer added safety and longer wear. All treads have color through entire thickness. All treads meet Flame Spread Rating of 75 or less using ASTM-E-84 Test.

### **SPECIFICATIONS:**

Furnish and install No. GS626 Molded Rubber Grit Strip Diamond Design Stair Treads from Musson Rubber Co. 3/16" thick; 12-1/4" deep; with 2" adjustable square nose. Two black\* 3/4" wide abrasive Grit Strips inlaid in tread, 1" from front edge. Treads shall have a sanded back for proper adhesion; contain no asbestos; molded to top quality homogeneous rubber compound; free of objectionable orders or imperfections which might impair service. Select standard length of : 36", 42", 48", 54", 60" or 72". Select standard color from Color Series I or Color Series II.

- Grit Strip inserts are also available in Brown, Gray, Beige, Safety Yellow or Safety Red at an extra cost.

## No. GS 626VI Visually Impaired



Available with one 2" wide, long wearing mineral coated Grit Strips recessed the full length of the tread at impact area. Helps prevent slipping. Design surface with Grit Strips offer added safety and longer wear. All treads have color through entire thickness. All treads meet Flame Spread Rating of 75 or less using ASTM-E-84 Test.

### SPECIFICATIONS:

Furnish and install No. GS626VI Molded Rubber Visually Impaired Grit-Strip Diamond Design Stair Treads from Musson Rubber Co., 3/16" thick; 12-1/4" deep; with 2" long adjustable square nose. One Black\* 2" wide abrasive Grit-Strip inlaid in tread, 1" from front edge. Treads shall have a sanded back for proper adhesion; contain no asbestos; molded of top quality homogenous rubber compound; free of objectionable odors or imperfections which might impair service. Select standard length of: 36", 42", 48", 54", 60" or 72". Select standard color from Color Series I or Color Series II.

- Grit Strip inserts are also available in Brown, Gray, Beige, Safety Yellow or Safety Red at an extra cost.

#### Color Series I



All colors must be selected from actual samples

#### Color Series II



All colors must be selected from actual samples