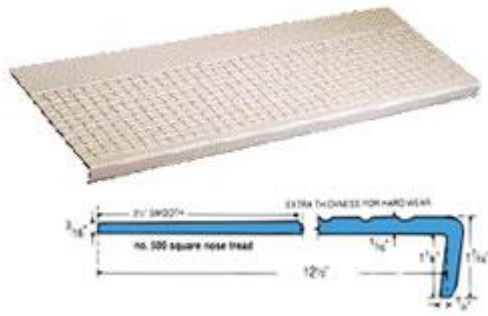


Rubber Treads 500



Our heaviest gauge molded rubber tread; exclusive rectangular design—for safety, durability and ease of maintenance; easily trimmed to exact size of steps. Tapered nosing insures better fit- smooth rear border facilitates cleaning. Meets Federal Specs. RR-T-650E and ZZ-T-001237 (GSA-FSS). Install with Musson #400 Neoprene Contact, #300 Water-based Contact Adhesive or #560 Rubber Flooring adhesive.

Improve appearance, add safety and durability to commercial, industrial or institutional stairways. For universities, schools, hospitals, banks, theatres, hotels, factories, airports, restaurants, shopping malls; all heavily traveled public stairways.

SPECIFICATIONS:

Furnish and install No. 500 Rectangular Design Stair Treads from Musson Rubber, Akron, Ohio; 5/16" thick, tapering to back edge; 12-1/2" deep. Treads shall have 1-1/8" square nose; a Flame Spread Rating of 75 or less using ASTM-E-84 Test; a sanded back to assure proper adhesion; contain no asbestos fiber; molded of top quality homogeneous rubber compound; color extending throughout thickness; free from objectionable odors, blisters, cracks or imperfections which might impair serviceability. Select standard length of 36", 42", 48", 54", 61" or 72"; Select standard color from Color Series I or Color Series II.

Grit Strip Rectangular Design Stair Tread No. GS500



Available with two 3/4" wide, long wearing mineral coated Grit Strips recessed the full length of the tread at impact area. Helps prevent slipping. Design surface with Grit Strips offer added safety and longer wear. All treads have color through entire thickness. All treads meet Flame Spread Rating of 75 or less using ASTM-E-84 Test.

SPECIFICATIONS:

Furnish and install No. GS500 Molded Rubber Grit Strip Rectangular Design Stair Treads from Musson Rubber Co. 5/16" thick; 12-1/2" deep; with 1-1/8" square nose. Two black* 3/4" wide abrasive Grit Strips inlaid in tread, 1" from front edge. Treads shall have a sanded back for proper adhesion; contain no asbestos; molded to top quality homogeneous rubber compound; free of objectionable orders or imperfections which might impair service. Select standard length of : 36", 42", 48", 54", 61" or 72". Select standard color from Color Series I or II.

- Grit Strip inserts are also available in Brown, Gray, Beige, Safety Yellow or Safety Red at an extra cost.

Grit Strip Rectangular Design Stair Tread No. GS500VI



Available with one 2" wide, long wearing mineral coated Grit Strip recessed the full length of the tread at impact area. Helps prevent slipping. Design surface with Grit Strips offer added safety and longer wear. All treads have color through entire thickness. All treads meet Flame Spread Rating of 75 or less using ASTM-E-84 Test.

SPECIFICATIONS:

Furnish and install No. GS500VI Molded Rubber Visually Impaired Grit-Strip Rectangular Design Stair Treads from Musson Rubber Co., 5/16" thick; 12-1/2" deep; 1-1/8" square nose. One Black* 2" wide abrasive Grit-Strip inlaid in tread, 1" from front edge. Treads shall have a sanded back for proper adhesion, contain no asbestos; molded of top quality homogenous rubber compound; free of objectionable odors or imperfections which might impair service. Select standard length of: 36", 42", 48", 54", 61" or 72". Select standard color from Color Series or II.

- Grit Strip inserts are also available in Brown, Beige, Safety Yellow or Safety Red at an extra cost.

Color Series I



All colors must be selected from actual samples

Color Series II



All colors must be selected from actual samples